

4.4 Maintenance of Campus Infrastructure

4.4.2 There are established systems and procedures for maintaining and utilizing physical, academic and support facilities - laboratory, library, sports complex, computers, classrooms etc.

The college has always taken efforts in providing the best possible infrastructure for effective teaching-learning environment through efficient use of ICT. Over the years the infrastructure of the college has been maintained and upgraded considering the developments and rising demands in the education sector.

Electrician, plumber, carpenter, IT care team and the maintenance committee appointed by the parent institute maintain the campus. The Housekeeping staff is outsourced. The security staff keeps the campus secured from miscreants.

Classrooms:

The college provides free wi-fi and internet facility to faculty, students and non-teaching staff. The college has 32 mbps Wi-Fi connection. There are 12 Classrooms having Wi-Fi access and provide conducive environment for technology enabled teaching –learning. They are well equipped with a wall mounted LCD, a computer. The frequent use of ICT enabled classroom benefit both the teachers and students in the teaching – learning process. The well-equipped and ICT enabled seminar hall is used for academic and non-academic programmes. The college also has camera for recording classroom lectures, tripod and a chroma curtain. The IT facilities are regularly maintained by the IT Care Team .

The support staff appointed by the parent institute for building maintenance and repairs perform their duties whenever needed.

The Central Library:

The library is Wi Fi enabled and has adequate digital learning resource facilities such as availability of academic CDs and DVDs, a subscription to INFLIBNET (N-LIST) and an access to computers for both teachers and students. It also provides access to the internet data base of research contents for academic purposes. The Library is fully automated and uses Prism software. The College has also formed a plagiarism policy in tune with that of Shivaji University recently. It is proposed to perform plagiarism check for research papers or research work. The Central Library is an Off – Campus Shivaji University, Kolhapur

Knowledge Resource Centre that provides e-Resources Service 24/7. The library is under CCTV surveillance and is maintained by the library staff.

Computer Lab:

Wi-Fi enabled, fully functional and well equipped **Computer Lab** is set up in the campus wherein Wi-Fi enabled 20 computers are installed. Both, the teachers and students can avail of this facility. The lab has a battery back-up. From the academic year the college has set up fully equipped NATA centre for the entrance examination of government jobs and professional courses. The IT Care Team maintains the infrastructure.

Departments:

All the departments, Gymkhana, NSS unit and the IQAC are provided with either laptops or desktops. Some departments have printer and LCD projectors. Separate rooms are assigned for NSS and Gymkhana. The department of psychology is used for counselling room as well. The peon and support staff maintain the department rooms.

Laboratories:

The Laboratories of Home Science (Food & Nutrition, and textile), Geography UG and PG, M.Phil and Ph.D. research centre, Psychology and newly set up labs of Physics, Chemistry, Botany, Zoology, Electronics and Computer are well equipped and as per the university norms. They are provided with laptop/desktop, printer, and LCD. Trained lab assistants are appointed maintains the equipment and . The dead stock registers are updated regularly.

The textile lab wherein the certificate of Fashion Designing is conducted has required furniture and necessary equipment. The Certificate Course in Beauty Parlour runs in a well-equipped set up.

Ground:

The ground is utilised for sports as well extra-curricular activities. Its maintenance is looked after by the peon assigned with the duty and the department of physical education.

Other Physical Facilities:

The college has other adequate physical facilities like Aqua Guard attached water cooler for clean and cold drinking water, common room, state of art wash rooms, health centre, centre for skill development courses, counselling centre, CAP (Central Assessment Programme) centre, strong room, canteen, yoga hall, Sanitary Napkin vending machine and Incinerator facility in the Washroom blocks, Gents Washrooms, parking place, hostel, study room for

students and staff, staff room, The peon or the support staff assigned with duties maintains the infrastructure.

Infrastructure for Extra-Curricular Activities:

The equipment for recreational activities such as music system, musical instruments, podium, standees and notice boards are available. The standees and wall mounted notice boards are used for informing students about academic, scholarships, exam related circulars and also for displaying wallpapers handwritten by students. **The corridors** are utilized for displaying important notices and students' creative work. It is also used for college prayer and assemblies.

Security:

The college has installed **CCTV camera** surveillance system. 24 CCTV cameras ensure observance of discipline as well as safety of students, faculty, other staff and facilities on the campus. Fire extinguishers are placed to meet emergency. **A complaint box** is installed and important contact numbers have been displayed by local police department in case of need.

Specialised Facilities

Ramps, railings, wheel chair, commode facility have been provided for differently-abled students. Stretcher and first aid facilities for medical emergency are provided.

The Office

The office is fully automated and uses in-house and Shivaji University, Kolhapur software. It provides reprographic facility to the faculty and students.

Links :

Infrastructure: <http://www.mahilamahavidyalaya.com/inf.htm>

ICT Enabled Tools: <http://www.mahilamahavidyalaya.com/ict.htm>

Library: <http://www.mahilamahavidyalaya.com/lib.htm>

Sports: <http://www.mahilamahavidyalaya.com/sport.htm>

Computer Centre: <http://www.mahilamahavidyalaya.com/bca.htm>

Safety Measures: <http://www.mahilamahavidyalaya.com/safetymeasures.htm>



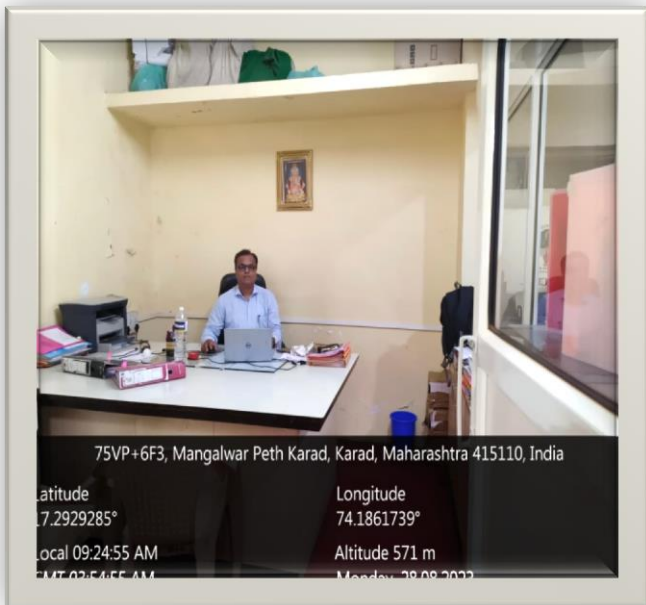
Shikshan Mandal Karad's

Mahila Mahavidyalaya Karad Dis.Satara Pin.415110

Principal Cabin



Vice-Principal Cabin





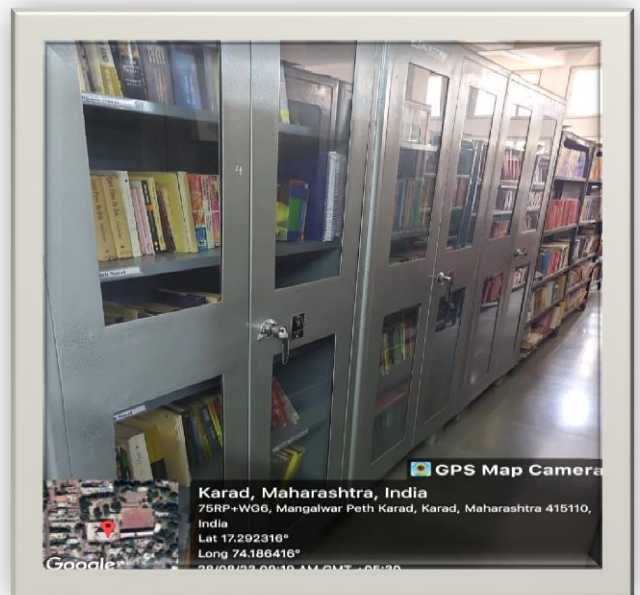
Shikshan Mandal Karad's

Mahila Mahavidyalaya Karad Dis.Satara Pin.415110

Office



Library





Shikshan Mandal Karad's
Mahila Mahavidyalaya Karad Dis.Satara Pin.415110

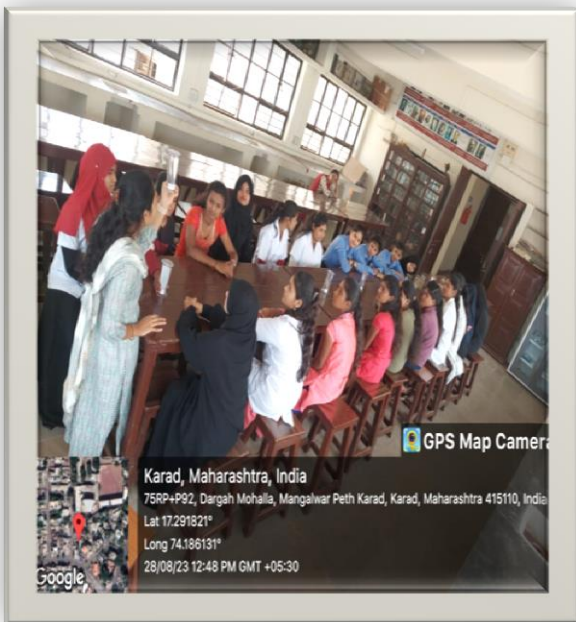
Science Lab





Shikshan Mandal Karad's
Mahila Mahavidyalaya Karad Dis.Satara Pin.415110

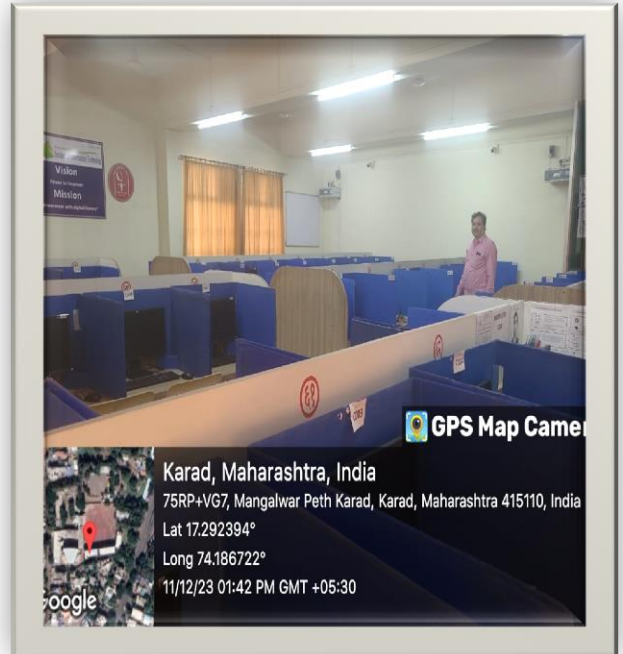
Science Lab





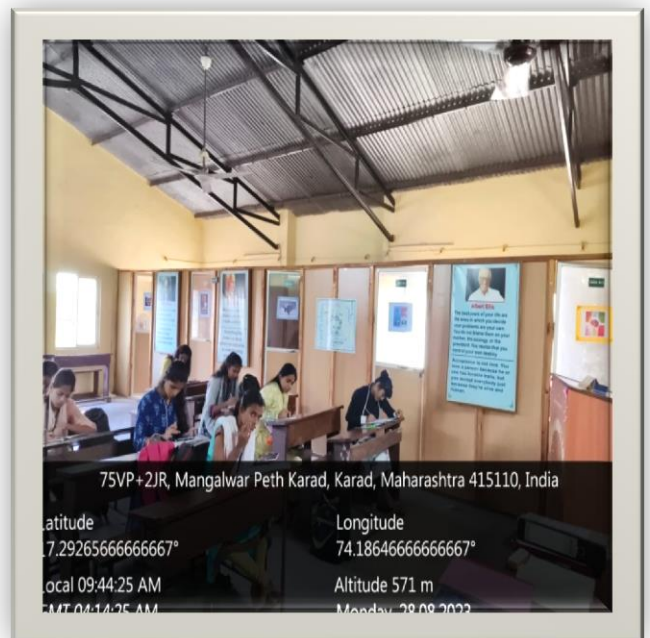
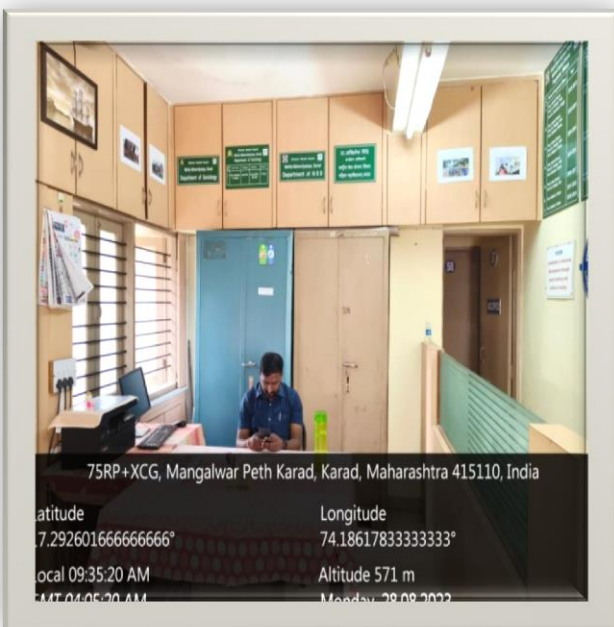
**Shikshan Mandal Karad's
Mahila Mahavidyalaya Karad Dis. Satara Pin. 415110**

Computer Lab - NTA



NSS Room

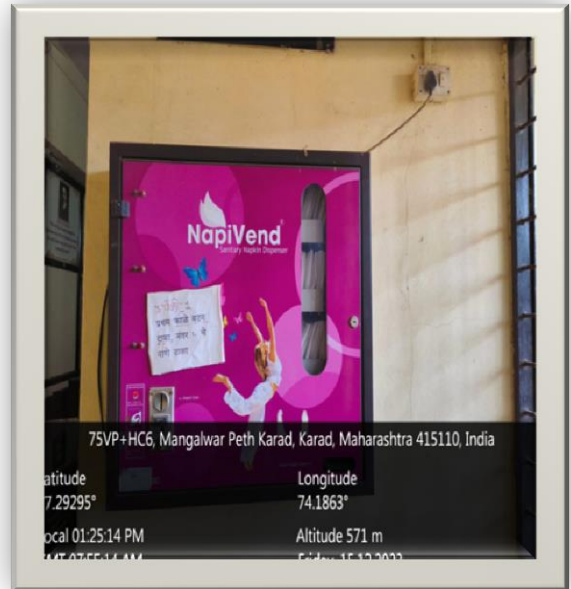
Psychology Lab





Shikshan Mandal Karad's
 Mahila Mahavidyalaya Karad Dis.Satara Pin.415110

Water Cooler & Vending Machine



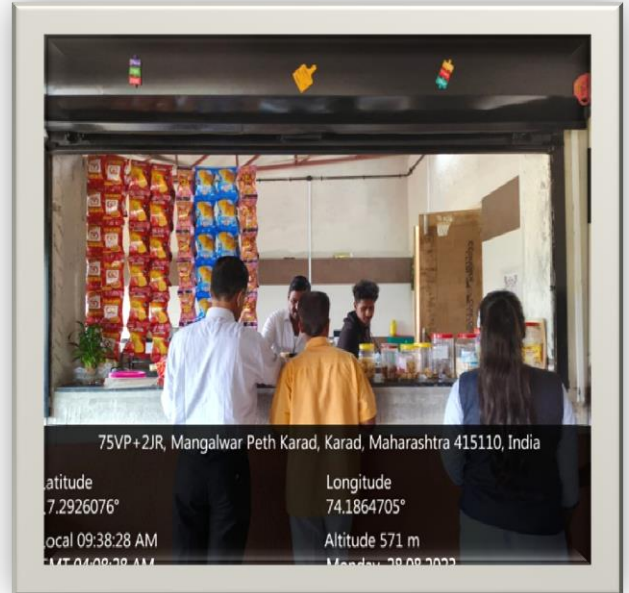
Playground & Gymnasium





**Shikshan Mandal Karad's
Mahila Mahavidyalaya Karad Dis.Satara Pin.415110**

Canteen



Notice Board

